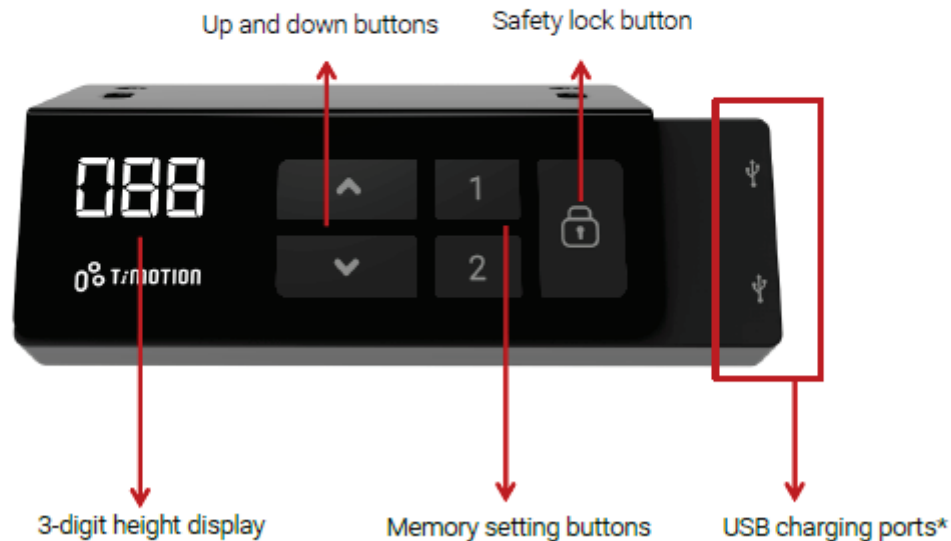


# GEIGER

## Geiger One & MP Height Adjustable Quick Reference Guide

### 1. User Interface Guide



### 2. Reset

1. Simultaneously press ▲ and ▼ for 3 seconds. Continue pressing the buttons until both columns are in the lowest position. When finished with the reset, the control box will make a "beep" sound and the buttons can be released.



2. When finished with the reset, the display will show the starting height.
3. Users must conduct a reset when operating the desk for the first time.

## 3. Adjusting the Height

Press ▲ or ▼ button until the desk reaches the preferred height.

## 4. Setting the Memorized Position

TDH18P supports a maximum of 2 memory positions.

### How to memorize a position:

1. Adjust the desk to the desired height.
2. Press the preferred memory button (1 or 2), with either ▲ or ▼ for 2 seconds. Once the display shows P1 or P2, the position is memorized.
3. Press (and hold) button 1 or 2 to move the desk to the memorized position. [\(Note 1\)](#)



[Note 1](#): It depends on the control box setting whether or not the memory button needs to be held.

## 5. Setting the Upper and Lower Height Limit

### A. Setting the upper height limit:

- (1) Adjust the desk to the preferred upper height limit.
- (2) Press ▲ and ▼ buttons together for less than 3 seconds, holding ▲ and release ▼ button. (Note 2)
- (3) Re-press ▼ for more than 3 times at a slow pace.
- (4) A beeping sound will notify you that the process has been completed.

### B. Disable the upper height limit:

- (1) Move the desk to the upper height limit being set.
- (2) Repeat instructions #2~4 above to disable the upper limit setting.

### C. Setting the lower height limit:

- (1) Adjust the desk to the preferred lower height limit.
- (2) Press ▲ and ▼ buttons together for less than 3 seconds, holding ▼ and release ▲ button. (Note 3)
- (3) Re-press ▲ for more than 3 times at a slow pace.
- (4) A beeping sound will notify you that the process has been completed.

### D. Disable the lower height limit:

- (1) Move the desk to the lower height limit being set.
- (2) Repeat instructions #2~4 above to disable the lower limit setting.

Note 2: Some control boxes may not support setting the upper and lower height limit functionality.

Note 3: More than 3 seconds will direct to "Reset" mode.

## 6. Presetting the Desk Starting Height

- (1) Press ▼ button until the desk reaches its lowest position and then release ▼ button. Re-press ▼ button again for 5 seconds and the digital display will flash for 10 seconds.
- (2) Adjust the starting height number with the ▲ or ▼ button.
- (3) After 10 seconds, the display will stop flashing and this will confirm that you have successfully set the starting height.

## 7. Lock / Unlock

- (1) Lock: Press the "lock" button for one second or do not touch any buttons for 20 seconds, then the image will be shown on the display to indicate that the lock was completed successfully (as below image).
- (2) Unlock: Hold the "lock" button for 3 seconds to unlock the hand control.

